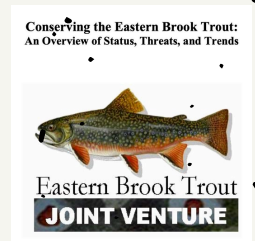


EBTJV Strategic Planning: A History

★ Star denotes the main strategic plan documents. Others are supporting or scaled-down versions.

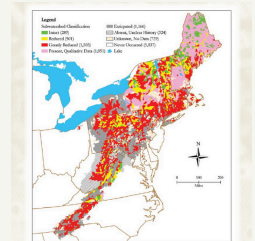
2005

Conserving the Eastern Brook Trout: an Overview of Status, Threats, and Trends. This documents summarizes an assessment of Brook Trout populations, documents opinions of fisheries managers on perturbations, and comments on future trends.



2006

Subwatershed scale assessment (HUC 12); first of its kind documenting the dramatic loss of brook trout habitat. This was followed in 2008 with CART analysis to predict brook trout occupancy in areas that lacked empirical data.



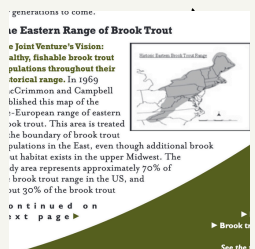
2008

★ Conserving the Eastern Brook Trout: Action Strategies (2008) This was the EBTJV's first Conservation Strategy. It summarizes the goals, objectives, and strategies designed to achieve the strategic goals of the EBTJV. This report also focuses on developing partnerships and securing funding.



2008

Roadmap to Restoration scaled down, more visually appealing version of the 2008 "Conserving the Eastern Brook Trout: Action Strategies".



2011

★ Conserving the Eastern Brook Trout: Action Strategies (2011). This was an update to the 2008 Conservation Strategy. Like the 2008 plan, this version contained numeric goals that were based on the 2006 assessment at the Subwatershed scale.



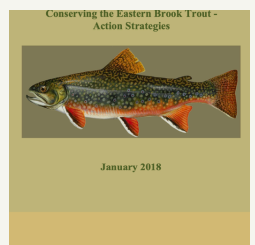
2016

EBTJV Completed its wild Brook Trout assessment at the catchment scale.

Classification Code	Number of
1.1	6,022
1.2	2,210
1.3	370
1.4	1,258
Totals	9,860

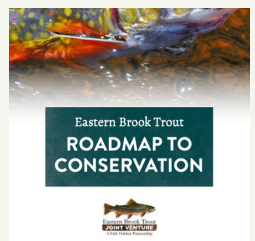
2018

★ Conserving the Eastern Brook Trout: Action Strategies This update to the Conservation Strategy outlines additional numeric goals and objectives following the 2015 wild Brook Trout assessment completed at the catchment scale.



2018

Roadmap to Conservation Public facing, scaled down report with EBTJV's Conservation Strategy and goals and objectives based on the catchment scale assessment.



2024

The EBTJV will update to the 2016 wild Brook Trout Assessment at the catchment scale, using a new on-line tool for data managers to update occupancy data from their jurisdictions.

